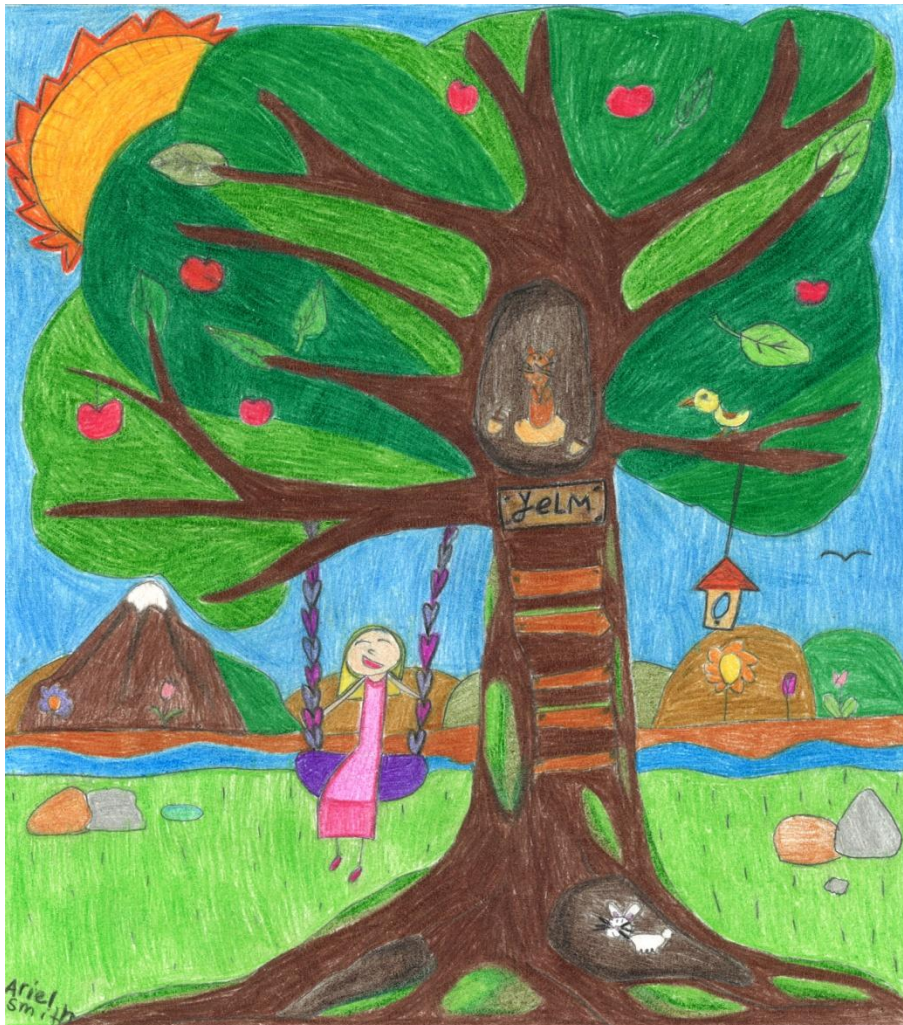


# 5-Year Urban Forestry Strategic Plan 2014-2019



Yelm Tree Advisory Board  
January 2014

# ACKNOWLEDGEMENTS

The creation of Yelm's Urban Forestry Plan in May 1998 was the result of a community recognizing two precious resources. Both resources touch our lives in many ways and yet we often don't realize their existence or benefits. The people of this community and their urban forest are the two very important resources. The City of Yelm and its citizens have chosen a proactive approach toward developing community support and establishing an Urban Forestry Program. After 5 years, the program is very successful, goals have been met, and new goals are now in place.

## CONTRIBUTORS

### YELM CITY COUNCIL

Ron Harding, Mayor  
Bob Isom, Mayor Pro-Tem  
Joe Baker  
Russ Hendrickson  
Mike McGowen  
JW Foster  
Tracey Wood  
Ken Garmann

### CITY STAFF

Gary Carlson  
Karen Bennett  
Kevin Ray

### YELM TREE ADVISORY BOARD

Rick Roberts, Chair  
John Graver  
Maureen Arroyo  
Ron Barnard

### WASHINGTON STATE DEPARTMENT OF NATURAL RESOURCES STAFF

Sarah Foster, Program Manager  
Linden Lampman, Urban Forestry Specialist

### CITY OF YELM

105 Yelm Ave W  
Yelm, WA 98597  
Phone: (360)458-3244  
Fax: (360)458-4348

### Prepared By

Yelm Tree Advisory Board  
Sound Urban Forestry – Kevin M. McFarland

# TABLE OF CONTENTS

<b>PREFACE</b>	<b>Page 4</b>
<b>VISION STATEMENT</b>	<b>5</b>
<b>MISSION STATEMENT</b>	<b>5</b>
<b>I. INTRODUCTION</b>	<b>6</b>
<b>II. PURPOSE</b>	<b>6</b>
<b>III. BACKGROUND</b>	<b>6</b>
<b>IV. OVERVIEW</b>	<b>7</b>
<b>V. ELEMENTS</b>	<b>8</b>
Proper Tree Planting and Maintenance	<b>8</b>
Public Relations/Promotion of Trees	<b>9</b>
Education	<b>10</b>
Advisory	<b>11</b>
Program Funding Efforts	<b>12</b>
<b>VI. IMPLEMENTATION</b>	<b>13</b>
Year 1 Projects	<b>13</b>
Year 2 Projects	<b>15</b>
Year 3 Projects	<b>17</b>
Year 4 Projects	<b>19</b>
Year 5 Projects	<b>21</b>
 <b>APPENDICES</b>	
A. Current Yelm Street Tree Inventory	
B. Hawthorn Evaluation	
C. Yelm Tree Advisory Board – Chapter 2.34 Yelm Municipal Code	
D. Protection Of Trees and Vegetation – Chapter 14.16 Yelm Municipal Code	
E. International Society of Arboriculture Pruning Standards	
F. American National Standards Institute for Tree Care Operations – Tree, Shrub and other Woody Plant Maintenance – Standard Practices	
G. American National Standards Institute – American Standard for Nursery Stock	
 <b>LIST OF TABLES</b>	
Table 1      Year 1 Projects	<b>14</b>
Table 2      Year 2 Projects	<b>16</b>
Table 3      Year 3 Projects	<b>18</b>
Table 4      Year 4 Projects	<b>20</b>
Table 5      Year 5 Projects	<b>22</b>
 <b>LIST OF FIGURES</b>	
Figure 1      Arbor Day Art Contest Winner	<b>6</b>
Figure 2      Yelm City Street Tree Replacement Plan	<b>10</b>

# PREFACE

The City of Yelm has a history associated with urban forestry. The first recorded Arbor Day Program was initiated by Miss Rose Marie Chabert in 1924. A plaque dedicated to her was located near the entry of the High School in 1935. The plaque will be placed near the Memorial Tree in City Hall as part of the Arbor Day 2014 Celebration. We also know that the current street trees were planted in 1936 by citizens and the local postmaster, L.O. Cochrane. Over eighty Hawthorn trees have been a source of pride and enjoyment for many decades. These plantings are the result of a vision that the past Yelm City Councils, City Departments, Park and Planning Commission members and many citizens have adopted. There is a heritage that exists; and it comes from a community that cared for the future. The Yelm Tree Board, City Staff and citizens would like to build on that heritage and ensure that we not only maintain the existing public trees, but seek to improve and add to them for generations to come.

We now look to recent accomplishments that exemplify community involvement and the efforts toward the establishment of an urban forestry program. Prior to applying for Washington Community Forestry Grant funding, the City of Yelm and its residents have pursued a proactive approach toward developing an urban forestry program. The following are community accomplishments and activities associated with urban forestry;

1. In 1996 the Yelm Chamber of Commerce funded a street tree inventory and evaluation to help City officials and the newly formed Tree Board decide on management options for the Hawthorn trees.
2. The Yelm Tree Advisory Board was formed in October 1996
3. The cities of Yelm and Lacey, Washington have an established Sister City Partnership. City officials and residents recognize the importance of community outreach and the benefits of trees. The Yelm community is dedicated to education concerning trees and urban forestry through Arbor Day events.
4. In October of 1996 the City of Yelm and its citizens participated in the first annual Washington State's Urban and Community Forestry Month. In addition to the celebration, Mayor Wolf read an Urban and Community Forestry Month proclamation and local high school students participated in the 1996 Shore to Shore Pine Relay as well as the 1997 Trees Across Washington Relay.
5. The City of Yelm and its residents actively pursue Tree City USA recognition yearly. Council Members have approved and maintain a tree fund for maintaining the urban forestry program. The funding fulfills one of the important standards for a community applying for Tree City USA recognition.
6. City Staff and Tree Board members developed, and maintain the Yelm Ordinance Protection of Trees and Vegetation, and the Maintenance, Planting and Standards for Trees and Other Vegetation. This ordinance helps to preserve trees and other vegetation during property development and provide for the regulation of the planting, maintenance, and removal of trees in the public right of way and City owned property.
7. The Tree Board implemented new urban forestry programs for the community, to include an Adopt-A-Tree and Memorial Tree Program, and Neighborhood Tree Grant Program, as well as sponsoring an Arbor Day Celebration each year, and receiving the Tree City USA recognition every year since the implementation of the Urban Forestry Program.
8. The Tree Board has completed the major goal of implementing the 5-Year Urban Forestry Strategic Plan for 1998-2002, meeting or exceeding most every goal and project in the plan, and has revised this plan for the next 5 years.

This 5-year urban forestry plan will provide a blueprint for future projects related to community forestry, including public education about trees, developing alternative funding sources, partnership opportunities, and general program goals. With citizen participation, and continued local support, Yelm's Urban and Community Forestry Program will become a sustainable program that provides a number of valuable services to current and future residents of Yelm.

## **VISION STATEMENT**

The Yelm Tree Advisory Board is proud of its accomplishments in maintaining, sustaining, and bettering the City of Yelm's Urban Forest. The Tree Board has reviewed the previous plan, and has made changes to continue this rewarding program, and to provide a guide for the next 5 years.

The products and benefits that have come from this plan are many. Trees and vegetation grace our City streets and parks, and provide habitat for wildlife, soften our city structures, clean our air, connect us with the past, protect our water resources and ensure that every resident experiences daily close contact with nature. Our vegetation is treasured for its aesthetic value as well as for the positive influence it provides the residents and business community. Within our City, there exist threads of diverse and well-maintained trees that reflect past community efforts and the commitment to the future.

Our community's urban forest is planted and maintained by youth, volunteers, and the community, creating a patchwork of nature and people in balance. People of all ages and backgrounds have formed lasting partnerships to participate actively in the stewardship and care-taking of our precious tree resource.

## **MISSION STATEMENT**

The Yelm Tree Board is empowered to:

1. Contribute to and maintain a comprehensive community tree management program for the care and establishment of trees on public property;
2. Establish standards for proper tree maintenance;
3. Advocate no net loss of the community's urban forest canopy;
4. Make recommendations that best serve the interest of the community, and the development of Yelm's Urban Forest to the City Council concerning ordinances, rules and regulations that pertain to trees on public and private property;
5. Obtain public testimony and/or input as deemed necessary;
6. Promote public education about trees;
7. Develop plans for innovative and joint funding for an urban forestry program from a variety of sources.

# URBAN FORESTRY STRATEGY

## I. INTRODUCTION

When one thinks of urban forestry, you could envision the leaves of fall, tall evergreens and tree-lined boulevards. Yelm has an existing urban forest with fall color and new trees being planted, but there is so much more. While some areas of urban forestry and community planning are new, other areas and resources are already available and being utilized within the city. The urban forest is a great asset to our environment. The community is identifying many of these existing resources and developing a sustainable urban forestry program.

## II. PURPOSE

The Yelm Tree Advisory Board, along with City Staff, developed this plan. It contains goals and policies that will guide the City of Yelm in its actions and decisions affecting the urban forest within City limits.

The purpose of this Urban Forestry Strategic Plan is to assist the Tree Board, City Staff, and citizens to build a self-sustaining urban forestry program. This action plan will be carried out with goals and their objectives to maintain and establish urban trees within the community over the next five years and beyond.

## III. BACKGROUND

The City of Yelm has been very proactive in its approach toward developing and maintaining its urban forestry program. The following Growth Management Policies, Adopted Protection of Trees & Vegetation Ordinance, and the Maintenance, Planting and Standards For Trees and Other Vegetation Ordinance contributes to the success of the urban forestry strategy plan.

### **Yelm Comprehensive Plan Policies**

The City of Yelm is operating under an active Growth Management Plan that is a joint comprehensive plan with the City and Thurston County. Policies and design standards relating to urban forestry issues are addressed under the Environment Element, Uniform Development Code, Protection of Trees and Vegetation and Landscaping requirements.

### **Environment Element**

Fish and Wildlife Priority Habitat, habitat types or elements with unique or significant value to one or more species as classified by the State Department of Fish and Wildlife. A priority habitat may consist of a unique vegetation type or dominant plant species, a described successional stage, or a specific structural element. As part of the critical areas map, the locations of Oregon White Oak habitat are to be used for review of proposed development and utility maintenance projects.

### **Protection of Trees and Vegetation**

Provides guidelines for the protection of existing trees, protection of trees during development, regulations for the planting, maintenance and removal of trees in the public right-of-way and on City owned property.

### **Landscape Requirements**

Provides minimum requirements and standards for landscaping and screening. The chapter provides for trees in the required landscaping, street trees, and trees in parking areas.

#### IV. OVERVIEW

The Yelm Tree Board and City Staff identified five elements that are considered important focus areas that affect the development and continuation of an urban forestry program. In this plan, goals and policies are grouped into the following basic elements:

1. Proper Tree Planting and Maintenance
2. Public Relations/Promotion of trees (no net loss)
3. Education
4. Advisory
5. Program Funding and Support Efforts

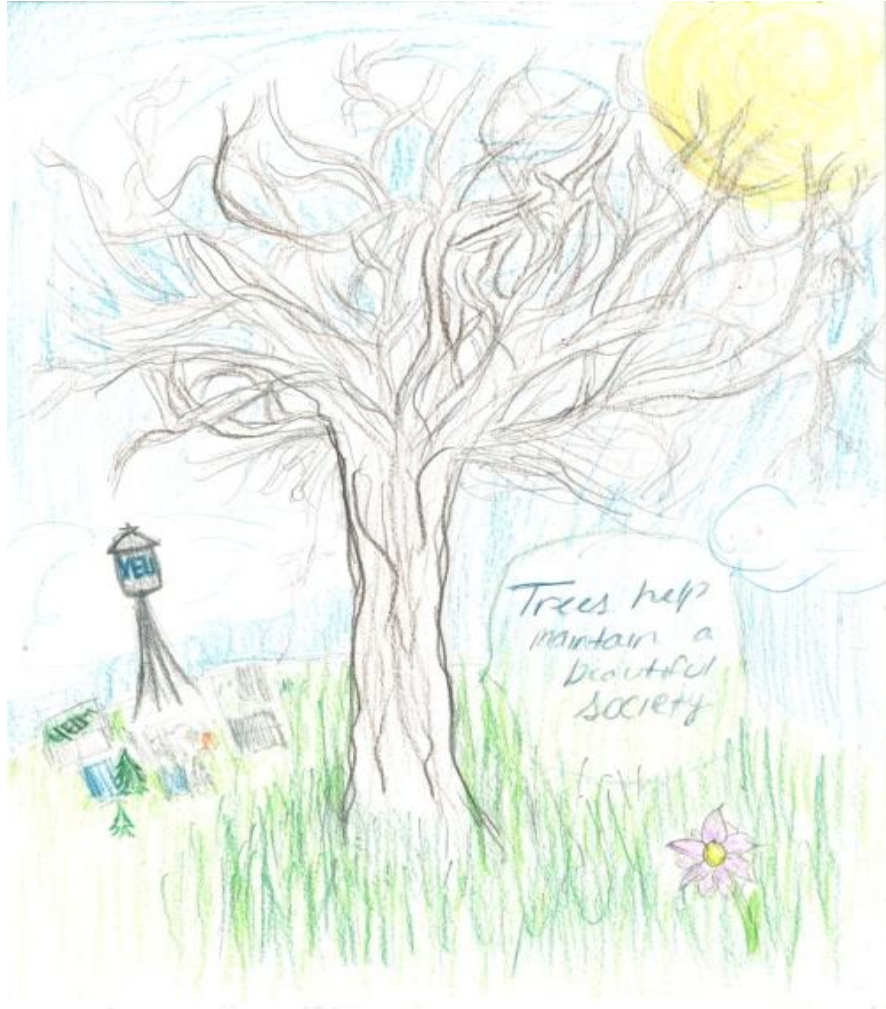


Figure 1 – Arbor Day Art Contest Winner

In addition to each element section there are “Action” items that describe and approach toward implementing the presented goals.

As part of the implementation section of this plan, there are descriptions for Year 1-5 projects. Each year will have an associated project or projects that describe the associated element and action item they represent. Furthermore, the projects are shown in a matrix form, which presents the Project, Schedule, Responsible Party, and the Cost Estimate for the specific project. The Executive Summary presents a matrix with all of the yearly projects and their associated information.

## **V. ELEMENTS**

### **1. Proper Tree Planting and Maintenance**

Many planting opportunities exist in the City, such as park, trail areas, under-planted arterials, new public facilities and new neighborhoods. Planting must take into consideration existing site constraints, current and future maintenance needs, and ensure their mature size and placement enhances the community environment.

#### **GOALS**

1. Identify suitable planting locations for trees on public property and identify appropriate trees for those sites.
2. Follow current American National Standards Institute, Inc. (ANSI) standards and specifications for nursery stock, planting specifications, stump grinding procedures, tree care operations – safety requirements and pruning specifications.
3. Improve the condition of public trees by improved monitoring and the quality of maintenance provided.
4. Maintain a GIS tree-planting list for municipal and public use.
5. Replace missing Street Trees on Major Arterials and Boulevards in 2014.
6. Annually replace five (5) damaged or vandalized Street Trees 2015-2019.

#### **Policy and Proposed Actions**

##### **POLICY 1.0**

The City shall develop and implement maintenance procedures to ensure the highest quality care that public trees can receive.

##### **Actions**

- 1.1 Establish the proper maintenance of the urban forest through adopted standards and contracts.
- 1.2 Educate City Staff about urban forestry issues through certification programs, workshop attendance, seminars, and informational materials.
- 1.3 Promote proper tree care by example.
- 1.4 Coordinate tree-related activities with municipal departments.
- 1.5 Establish a maintenance and care schedule for City street trees.

##### **POLICY 2.0**

The City will enhance the quality of all developed public land by planting and maintaining appropriate trees.

##### **Actions**

- 2.1 Inventory available planting space in street rights-of-way and park areas to determine composition and planting needs, as budget allows.
- 2.2 Maintain the Master Street and Park Tree List to ensure proper plantings of trees on public and private property.
- 2.3 Implement maintenance and care schedule for street and park trees.
- 2.4 Annually replace up to 5 diseased or vandalized street trees.



## 2. Public Relations / Promotion of Trees

Trees grace our environment and our lives; they provide a habitat for wildlife, soften city structures, clean our air, provide us with a connection to the past and to living nature, and protect our water resources. The Yelm Tree Advisory Board is empowered to help develop and maintain a comprehensive community tree management program for the establishment and care of trees on public property within the city limits.

An important aspect in developing and maintaining the urban forestry program and strategy is public involvement. The Yelm Tree Advisory Board is representing the public interest, and receiving input from them is crucial. To establish partnerships and direct public involvement, the Board continues to solicit ideas and participation from the residents of this community. The people of this community are a major part of the urban forest resources.

### GOALS

1. To notify the local papers about the program and the Board's activities.
2. Enhance the Tree Board webpage on the City of Yelm website to provide better awareness for the public and local media of Board Activities and special events.
3. To seek public comment and promote public awareness of the many benefits of trees, as well as the fiscal responsibility involved in maintaining an urban forest.
4. To establish ongoing outreach programs in conjunction with recurrent community events.
5. To recognize developers and local businesses for outstanding efforts in creating and/or maintaining their required landscape.
6. To continue the Adopt-A-Tree Program which promotes public/corporate awareness as well as interest in the nurturing of our trees.
7. To continue the Memorial Tree Program which promotes public/corporate awareness as well as personal interest in the nurturing of our trees.

### Policy and Proposed Actions

#### POLICY 1.0

The City shall use a variety of means to enlighten and inform the public and municipal staff about urban forestry and Yelm's program.

**Figure 2.** Yelm City Street Tree Replacement Plan



## Actions

- 1.1 Participate in local department mailings.
- 1.2 A Tree Board representative will present a yearly update of the Board's activities at a Council meeting.
- 1.3 Notice of Tree Board activities or special events will be furnished to the local media.
- 1.4 Establish a relationship with the Nisqually Valley News wherein they would publish articles to promote Tree Board events while promoting interest in the care of the urban forest.
- 1.5 Establish a Recognition Program for developers and local businesses.
- 1.6 Review City ordinance and advise the City Council on recommended changes (if any) to planning and development codes as they relate to establishing and developing the urban forest and promoting the image of Tree City USA.
- 1.7 Continue the Adopt-A-Tree and Memorial Tree program and investigate new ways to present the plan to local businesses, civic leaders, and citizens for maximum participation.
- 1.8 Apply for Tree City USA recognition annually.
- 1.9 Enhance City website to notify and communicate with the public and local media about board activities and events.
- 1.10 Continue Urban Forestry Celebrations, Arbor Day, and Tree City USA.

## 3. Education

The City of Yelm will strive for an educational program recognizing trees as an important part of a healthy environment. General education concerning tree planting, maintenance, and the benefits of well-placed trees is perhaps the most important tool that can be used to ensure that Yelm's trees continue to be an integral part of its future. By including residents of all ages in tree plantings, other educational events, projects or planning processes, valuable information can be shared with those who will make critical decisions here in the future.

### GOALS

1. Provide detailed public information to homeowners, businesses, citizen organizations, local school groups and others about the City's urban forestry program, how to plant and care for trees, and how to participate in urban forestry projects.
2. Maintain an urban forestry speakers resource list.
3. Train and educate City Staff concerning urban forestry.
4. Maintain and update a mailing list for program support and information outreach.
5. Maintain relationships with local media.

### Policy and Proposed Actions

#### POLICY 1.0

The City shall develop an educational program to inform the public and City Staff about the importance of the urban forest and the policies in place to protect, establish and maintain it.

#### Actions

- 1.1 Develop and distribute informational brochures concerning the establishment and maintenance of urban trees, Tree Advisory Board, Adopt-A-Tree Program, approved tree list, Tree City USA Program.
- 1.2 Research and implement Certified Arborist Training for City Staff members.
- 1.3 Coordinate among all City departments and utilities to integrate the urban forest program into each department or utility's normal activities.

- 1.4 Research ways to present the Adopt-A-Tree and Memorial Tree Programs to local businesses, civic leaders, and citizens for maximum participation.
- 1.5 Contribute tree-related informational articles to local newspaper columns, and local organization newsletters.

#### POLICY 2.0

The City shall support the Tree Board's activities to develop an outreach program to create support and educate the public about urban forestry.

#### Actions

- 2.1 Reward and publicize correct tree care or planting within the community, whether residential or corporate.
- 2.2 Foster volunteer support for the urban forestry program and tree nursery such as voluntary plantings or maintenance activities.
- 2.3 Support Tree Board cooperation with similar boards throughout the Puget Sound region and State in the effort to further educate itself.
- 2.4 Tree Advisory Board will conduct yearly reviews of past accomplishments to improve future goals, activities, and the overall urban forestry program.
- 2.5 Participate in the annual State Urban Forestry Celebrations such as Arbor Day and the Urban Forestry Month.

### **4. Advisory**

In order to provide assistance to the City Council, City Staff and citizens concerning public trees it is necessary to maintain a viable Yelm Tree Advisory Board. The Advisory Board shall be responsible to the City Council for its duties and actions.

#### GOALS

1. Make recommendations to the City Council concerning ordinances, rules, contracted tree work, and regulations that pertain to trees on public property that best serve the interests of the community.
2. Obtain public testimony and/or input as deemed necessary.

#### Policy and Proposed Actions

#### POLICY 1.0

The Yelm Tree Advisory Board shall promote and advise City Council and municipal departments concerning appropriate public tree plantings.

#### Actions

- 1.1 Maintain street and park tree list resource.
- 1.2 Develop and advise street tree replacement plantings and future street and park tree designs.
- 1.3 Advise and offer resources to City Council or municipal departments as to public tree maintenance and establishment.

## 5. Program Funding and Support Efforts

There are major factors or contributors to a successful urban forestry program. The support of the community and municipal staff and crucial for a sustainable program. Funding is just as important. The Yelm community and City Staff must look at alternative sources of money and volunteerism to ensure the sustainability of the urban forestry program.

### GOALS

1. Maintain and administer the annual budget for the Yelm Urban Forestry Program.
2. Continue and enhance the Adopt-A-Tree and Memorial Tree programs.
3. Solicit current and future funding or donations.
4. Research and apply for future grant money.
5. Solicit community support through volunteer services.

### Policy and Proposed Actions

#### POLICY 1.0

The City shall encourage the organization and management of a program for citizen groups or individuals to provide an urban forest support system through volunteers and providing and avenue for funding or donations.

#### Actions

- 1.1 Rally support through physical and monetary means.
- 1.2 Maintain the tree account for the program.
- 1.3 Develop community support through volunteer efforts, material donations, etc.
- 1.4 Continue the Adopt-A-Tree and Memorial Tree programs, researching new ways to enhance the programs.

#### POLICY 2.0

The City shall encourage the sustainability of the Yelm Urban Forestry Program through an annual budget, applying for grants, staff involvement, and departmental support.

#### Actions

- 2.1 Continue current, and look for new programs that can contribute financially to the program.
- 2.2 Research and apply for future grant opportunities
  - WADNR Urban and Community Forestry Grant
  - National Tree Trust Grant
  - National Urban and Community Forestry Advisory Council Grant
- 2.3 Encourage and coordinate departmental cooperation and support.

## VI. IMPLEMENTATION

Each YEARLY PROJECT has a reference to an associated element. A table displays the project with an estimated starting and ending date, the responsible parties who will carry out the project, and the estimated cost for the project.

### YEAR 1 PROJECTS

#### Proper Tree Planting and Maintenance

- Regular care and maintenance of city street trees. Treat City Hall Elm Trees for Dutch Elm Disease. Element #1, Action 1.3, 2.3
- Treat downtown Hawthorn Trees for Leaf Spot Semi-Annually. Element #1, Action 1.3, 2.3
- Map GIS street tree inventory. Element #1, Action 1.7

#### Public Relations/Promotion of Trees

- Continue Adopt-A-Tree and Memorial Tree Programs. Element #2, Action 1.7
- Urban Forestry Celebrations, Arbor Day, Tree City USA. Element #2, Action 2.0
- Enhance the city website to notify and communicate with the public and local media about board activities and events. Element #2, Action 1.3, 1.9

#### Education

- Research new ways to promote the AAT & MT programs. Element #3, Action 1.5
- Research the feasibility of Certified Arborist Training for staff members. Element #3, Action 1.2
- Provide proper tree care brochures at annual Arbor Day Celebration. Element #3, Action 1.1

#### Advisory

- Review Street Tree List for deletion or additions. Element #4, Action 1.1

#### Program Funding and Support Efforts

- Continue Adopt-A-Tree and Memorial Tree Programs, and research new ways to promote the AAT & MT programs. Element #5, Action 1.4
- Research grant opportunities. Element #5, Action 2.2
- Update City digital sign with Tree Board information. Element #5, Action 1.4, 2.3

**Table 1. Year 1 Projects**

PROJECT	SCHEDULE Start & End Date	RESPONSIBLE PARTY	COST ESTIMATE
<b>Tree Planting and maintenance</b> <ul style="list-style-type: none"> <li>• Street tree\Elm maintenance</li> <li>• Replace 25 missing street trees</li> <li>• GIS Map street tree inventory</li> </ul>	Annual	City Staff Consultant Contractor	\$11300.00 \$3500.00 \$550.00
<b>Public Relations/Promotion</b> <ul style="list-style-type: none"> <li>• Arbor Day, Adopt a Tree, Memorial Tree Program</li> <li>• Enhance City Website</li> </ul>	Annual	City Staff Tree Board Citizens	\$2500
<b>Education</b> <ul style="list-style-type: none"> <li>• Research Certified Arborist Training for Staff</li> <li>• Research Ideas to Promote AAT &amp; MT Programs</li> </ul>	Annual	City Staff Tree Board Consultant	TBD
<b>Advisory</b> <ul style="list-style-type: none"> <li>• Maintain Street Tree/Park Tree List Resource</li> </ul>	Annual	City Staff Tree Board Consultant	\$600
<b>Additional Program Funding and Support</b> <ul style="list-style-type: none"> <li>• Research Funding Thru Grants</li> </ul>	Annual	City Staff Tree Board Consultant	\$100

## YEAR 2 PROJECTS

### Proper Tree Planting and Maintenance

- Regular care and maintenance of city street trees. Treat City Hall Elm Trees for Dutch Elm Disease. Element #1, Action 1.3, 2.3
- Map GIS street tree inventory. Element #1, Action 1.7

### Public Relations/Promotion of Trees

- Continue Adopt-A-Tree and Memorial Tree Programs. Element #2, Action 1.7
- Urban Forestry Celebrations, Arbor Day, Tree City USA. Element #2, Action 2.0
- Enhance the city website to notify and communicate with the public and local media about board activities and events. Element #2, Action 1.3, 1.9

### Education

- Research new ways to promote the AAT & MT programs. Element #3, Action 1.5
- Research the feasibility of Certified Arborist Training for staff members. Element #3, Action 1.2
- Provide proper tree care brochures at annual Arbor Day Celebration. Element #3, Action 1.1

### Advisory

- Review Street Tree List for deletion or additions. Element #4, Action 1.1

### Program Funding and Support Efforts

- Continue Adopt-A-Tree and Memorial Tree Programs, and research new ways to promote the AAT & MT programs. Element #5, Action 1.4
- Research grant opportunities. Element #5, Action 2.2
- Update City digital sign with Tree Board information. Element #5, Action 1.4, 2.3

**Table 2. Year 2 Projects**

PROJECT	SCHEDULE Start & End Date	RESPONSIBLE PARTY	COST ESTIMATE
<p><b>Tree Planting and maintenance</b></p> <ul style="list-style-type: none"> <li>• Street tree\Elm maintenance</li> <li>• Replace 5 missing street trees</li> <li>• GIS Map street tree inventory</li> </ul>	Annual	City Staff Consultant Contractor	\$12204.00 \$750.00 \$550.00
<p><b>Public Relations/Promotion</b></p> <ul style="list-style-type: none"> <li>• Arbor Day, Adopt a Tree, Memorial Tree Program</li> <li>• Enhance City Website</li> </ul>	Annual	City Staff Tree Board Citizens	\$2500
<p><b>Education</b></p> <ul style="list-style-type: none"> <li>• Research Certified Arborist Training for Staff</li> <li>• Research Ideas to Promote AAT &amp; MT Programs</li> </ul>	Annual	City Staff Tree Board Consultant	TBD
<p><b>Advisory</b></p> <ul style="list-style-type: none"> <li>• Maintain Street Tree/Park Tree List Resource</li> </ul>	Annual	City Staff Tree Board Consultant	\$600
<p><b>Additional Program Funding and Support</b></p> <ul style="list-style-type: none"> <li>• Research Funding Thru Grants</li> </ul>	Annual	City Staff Tree Board Consultant	\$100



## YEAR 3 PROJECTS

### Proper Tree Planting and Maintenance

- Regular care and maintenance of city street trees. Treat City Hall Elm Trees for Dutch Elm Disease. Element #1, Action 1.3, 2.3
- Treat downtown Hawthorn Trees for Leaf Spot Semi-Annually. Element #1, Action 1.3, 2.3
- Map GIS street tree inventory. Element #1, Action 1.7

### Public Relations/Promotion of Trees

- Continue Adopt-A-Tree and Memorial Tree Programs. Element #2, Action 1.7
- Urban Forestry Celebrations, Arbor Day, Tree City USA. Element #2, Action 2.0
- Enhance the city website to notify and communicate with the public and local media about board activities and events. Element #2, Action 1.3, 1.9

### Education

- Research new ways to promote the AAT & MT programs. Element #3, Action 1.5
- Research the feasibility of Certified Arborist Training for staff members. Element #3, Action 1.2
- Provide proper tree care brochures at annual Arbor Day Celebration. Element #3, Action 1.1

### Advisory

- Review Street Tree List for deletion or additions. Element #4, Action 1.1

### Program Funding and Support Efforts

- Continue Adopt-A-Tree and Memorial Tree Programs, and research new ways to promote the AAT & MT programs. Element #5, Action 1.4
- Research grant opportunities. Element #5, Action 2.2
- Update City digital sign with Tree Board information. Element #5, Action 1.4, 2.3

**Table 3. Year 3 Projects**

PROJECT	SCHEDULE Start & End Date	RESPONSIBLE PARTY	COST ESTIMATE
<p><b>Tree Planting and maintenance</b></p> <ul style="list-style-type: none"> <li>• Street tree\Elm maintenance</li> <li>• Replace 5 missing street trees</li> <li>• GIS Map street tree inventory</li> </ul>	Annual	City Staff Consultant Contractor	<p>\$13200.00</p> <p>\$750.00</p> <p>\$550.00</p>
<p><b>Public Relations/Promotion</b></p> <ul style="list-style-type: none"> <li>• Arbor Day, Adopt a Tree, Memorial Tree Program</li> <li>• Enhance City Website</li> </ul>	Annual	City Staff Tree Board Citizens	\$2500
<p><b>Education</b></p> <ul style="list-style-type: none"> <li>• Research Certified Arborist Training for Staff</li> <li>• Research Ideas to Promote AAT &amp; MT Programs</li> </ul>	Annual	City Staff Tree Board Consultant	TBD
<p><b>Advisory</b></p> <ul style="list-style-type: none"> <li>• Maintain Street Tree/Park Tree List Resource</li> </ul>	Annual	City Staff Tree Board Consultant	\$600
<p><b>Additional Program Funding and Support</b></p> <ul style="list-style-type: none"> <li>• Research Funding Thru Grants</li> </ul>	Annual	City Staff Tree Board Consultant	\$100

## YEAR 4 PROJECTS

### Proper Tree Planting and Maintenance

- Regular care and maintenance of city street trees. Treat City Hall Elm Trees for Dutch Elm Disease. Element #1, Action 1.3, 2.3
- Map GIS street tree inventory. Element #1, Action 1.7

### Public Relations/Promotion of Trees

- Continue Adopt-A-Tree and Memorial Tree Programs. Element #2, Action 1.7
- Urban Forestry Celebrations, Arbor Day, Tree City USA. Element #2, Action 2.0
- Enhance the city website to notify and communicate with the public and local media about board activities and events. Element #2, Action 1.3, 1.9

### Education

- Research new ways to promote the AAT & MT programs. Element #3, Action 1.5
- Research the feasibility of Certified Arborist Training for staff members. Element #3, Action 1.2
- Provide proper tree care brochures at annual Arbor Day Celebration. Element #3, Action 1.1

### Advisory

- Review Street Tree List for deletion or additions. Element #4, Action 1.1

### Program Funding and Support Efforts

- Continue Adopt-A-Tree and Memorial Tree Programs, and research new ways to promote the AAT & MT programs. Element #5, Action 1.4
- Research grant opportunities. Element #5, Action 2.2
- Update City digital sign with Tree Board information. Element #5, Action 1.4, 2.3

**Table 4. Year 4 Projects**

<b>PROJECT</b>	<b>SCHEDULE Start &amp; End Date</b>	<b>RESPONSIBLE PARTY</b>	<b>COST ESTIMATE</b>
<p><b>Tree Planting and maintenance</b></p> <ul style="list-style-type: none"> <li>• Street tree\Elm maintenance</li> <li>• Replace 5 missing street trees</li> <li>• GIS Map street tree inventory</li> </ul>	Annual	City Staff Consultant Contractor	\$14200.00 \$750.00 \$550.00
<p><b>Public Relations/Promotion</b></p> <ul style="list-style-type: none"> <li>• Arbor Day, Adopt a Tree, Memorial Tree Program</li> <li>• Enhance City Website</li> </ul>	Annual	City Staff Tree Board Citizens	\$2500
<p><b>Education</b></p> <ul style="list-style-type: none"> <li>• Research Certified Arborist Training for Staff</li> <li>• Research Ideas to Promote AAT &amp; MT Programs</li> </ul>	Annual	City Staff Tree Board Consultant	TBD
<p><b>Advisory</b></p> <ul style="list-style-type: none"> <li>• Maintain Street Tree/Park Tree List Resource</li> </ul>	Annual	City Staff Tree Board Consultant	\$600
<p><b>Additional Program Funding and Support</b></p> <ul style="list-style-type: none"> <li>• Research Funding Thru Grants</li> </ul>	Annual	City Staff Tree Board Consultant	\$100

## YEAR 5 PROJECTS

### Proper Tree Planting and Maintenance

- Regular care and maintenance of city street trees. Treat City Hall Elm Trees for Dutch Elm Disease. Element #1, Action 1.3, 2.3
- Treat downtown Hawthorn Trees for Leaf Spot Semi-Annually. Element #1, Action 1.3, 2.3
- Map GIS street tree inventory. Element #1, Action 1.7

### Public Relations/Promotion of Trees

- Continue Adopt-A-Tree and Memorial Tree Programs. Element #2, Action 1.7
- Urban Forestry Celebrations, Arbor Day, Tree City USA. Element #2, Action 2.0
- Enhance the city website to notify and communicate with the public and local media about board activities and events. Element #2, Action 1.3, 1.9

### Education

- Research new ways to promote the AAT & MT programs. Element #3, Action 1.5
- Research the feasibility of Certified Arborist Training for staff members. Element #3, Action 1.2
- Provide proper tree care brochures at annual Arbor Day Celebration. Element #3, Action 1.1

### Advisory

- Review Street Tree List for deletion or additions. Element #4, Action 1.1

### Program Funding and Support Efforts

- Continue Adopt-A-Tree and Memorial Tree Programs, and research new ways to promote the AAT & MT programs. Element #5, Action 1.4
- Research grant opportunities. Element #5, Action 2.2
- Update City digital sign with Tree Board information. Element #5, Action 1.4, 2.3

**Table 5. Year 5 Projects**

PROJECT	SCHEDULE Start & End Date	RESPONSIBLE PARTY	COST ESTIMATE
<b>Tree Planting and maintenance</b> <ul style="list-style-type: none"> <li>• Street tree\Elm maintenance</li> <li>• Replace 5 missing street trees</li> <li>• GIS Map street tree inventory</li> </ul>	Annual	City Staff Consultant Contractor	\$15350.00 \$750.00 \$550.00
<b>Public Relations/Promotion</b> <ul style="list-style-type: none"> <li>• Arbor Day, Adopt a Tree, Memorial Tree Program</li> <li>• Enhance City Website</li> </ul>	Annual	City Staff Tree Board Citizens	\$2500
<b>Education</b> <ul style="list-style-type: none"> <li>• Research Certified Arborist Training for Staff</li> <li>• Research Ideas to Promote AAT &amp; MT Programs</li> </ul>	Annual	City Staff Tree Board Consultant	TBD
<b>Advisory</b> <ul style="list-style-type: none"> <li>• Maintain Street Tree/Park Tree List Resource</li> </ul>	Annual	City Staff Tree Board Consultant	\$600
<b>Additional Program Funding and Support</b> <ul style="list-style-type: none"> <li>• Research Funding Thru Grants</li> </ul>	Annual	City Staff Tree Board Consultant	\$100

# APPENDICES

- A. Hawthorn Evaluation
- B. Yelm Tree Advisory Board – Chapter 2.34 Yelm Municipal Code
- C. Protection Of Trees and Vegetation – Chapter 14.16 Yelm Municipal Code
- D. Street Tree list
- E. International Society of Arboriculture Pruning Standards
- F. American National Standards Institute for Tree Care Operations – Tree, Shrub and Other Woody Plant Maintenance – Standard Practices
- G. American National Standards Institute – American Standard for Nursery Stock